



# **CSAI**

## **Field Construction Services**

## **What do we mean for “Construction”?**

The term “Construction” may include:

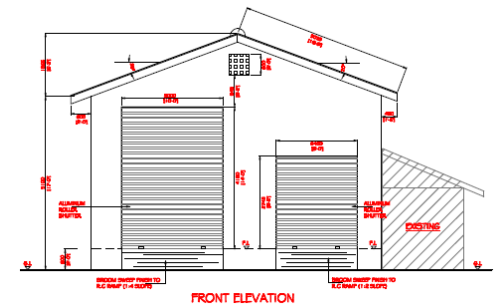
1. Installation of new facilities
2. Renovation of existing facilities
3. Alterations of existing facilities
4. Upgrades of existing facilities

## FIELD CONSTRUCTION PROJECTS

1. HUMANITARIAN, EMERGENCY and COOPERATION



2. OFFICE, HOUSING and FACILITY BUILDING for DOs

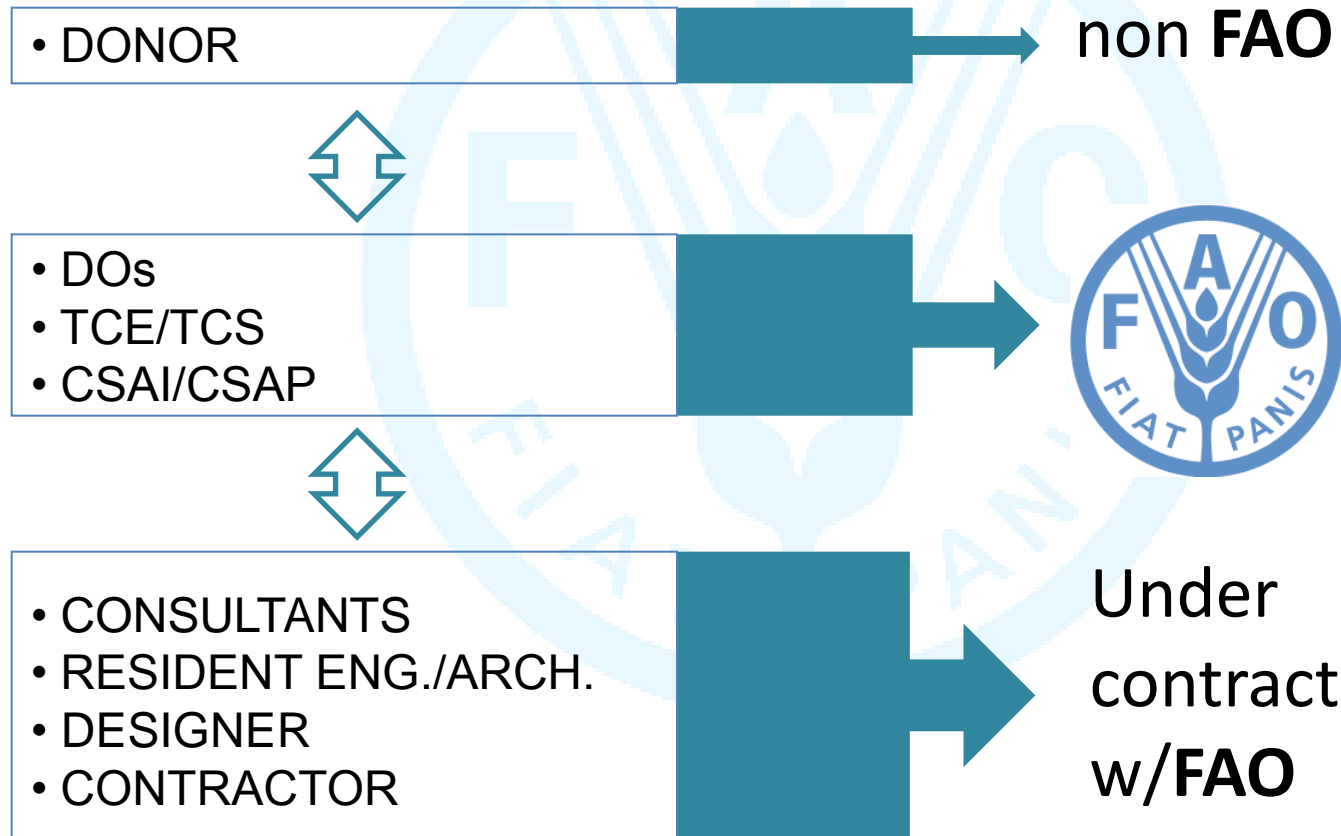


## MAIN GOALS

- **CLEAR GUIDELINES** ON FIELD MISSIONS
- CLOSER **PARTNERSHIP** WITH TC DEPARTMENT
- CLIENT **ASSESSMENT** FROM THE VERY BEGINNING
- DEVELOP A **MONITORING SYSTEM** FOR FAO FACILITIES WORLD WIDE
- IMPLEMENT **FIELD SECURITY** MEASURES
- ISSUE OF A **STANDING OPERATING PROCEDURES** MANUAL
- ISSUE OF A **CONSTRUCTION DESIGN CRITERIA** MANUAL

# CSA INFRASTRUCTURE

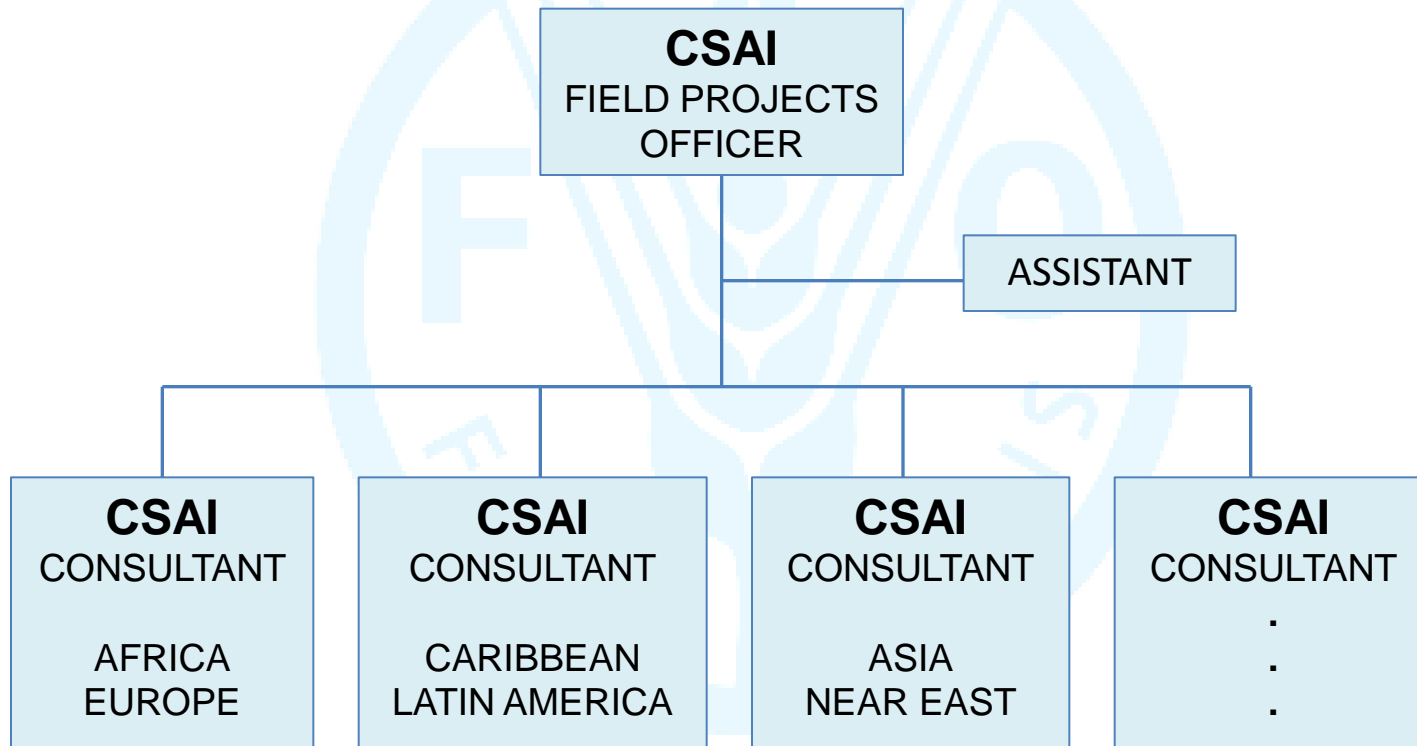
## ENTITIES INVOLVED



PROJECT ASSESSMENT

project definition

## CSAI FIELD CONSTRUCTION PROJECTS UNIT



## What do we need from our client?

- THE REQUEST
- THE INFORMATION
- THE FINANCING

- MIDTERM/LONGTERM PLANIFICATION of FUTURE PROJECTS



**TC**

## What can we provide our client?

- TECHNICAL INFORMATION, EVALUATION, ANSWERS TO **TCE/TCS**
- ASSISTANCE FOR THE BEST MANAGEMENT
- ASSIST DOs, **TCE/TCS** TO CHECK CERTIFICATIONS FROM TECHNICAL POINT of VIEW
- IDENTIFY TECHNICAL RESOURCES (PERSONNEL or CONSULTANTS)
- ASSURE MAINTENANCE of BUILDINGS and PROPERTIES of **FAO**



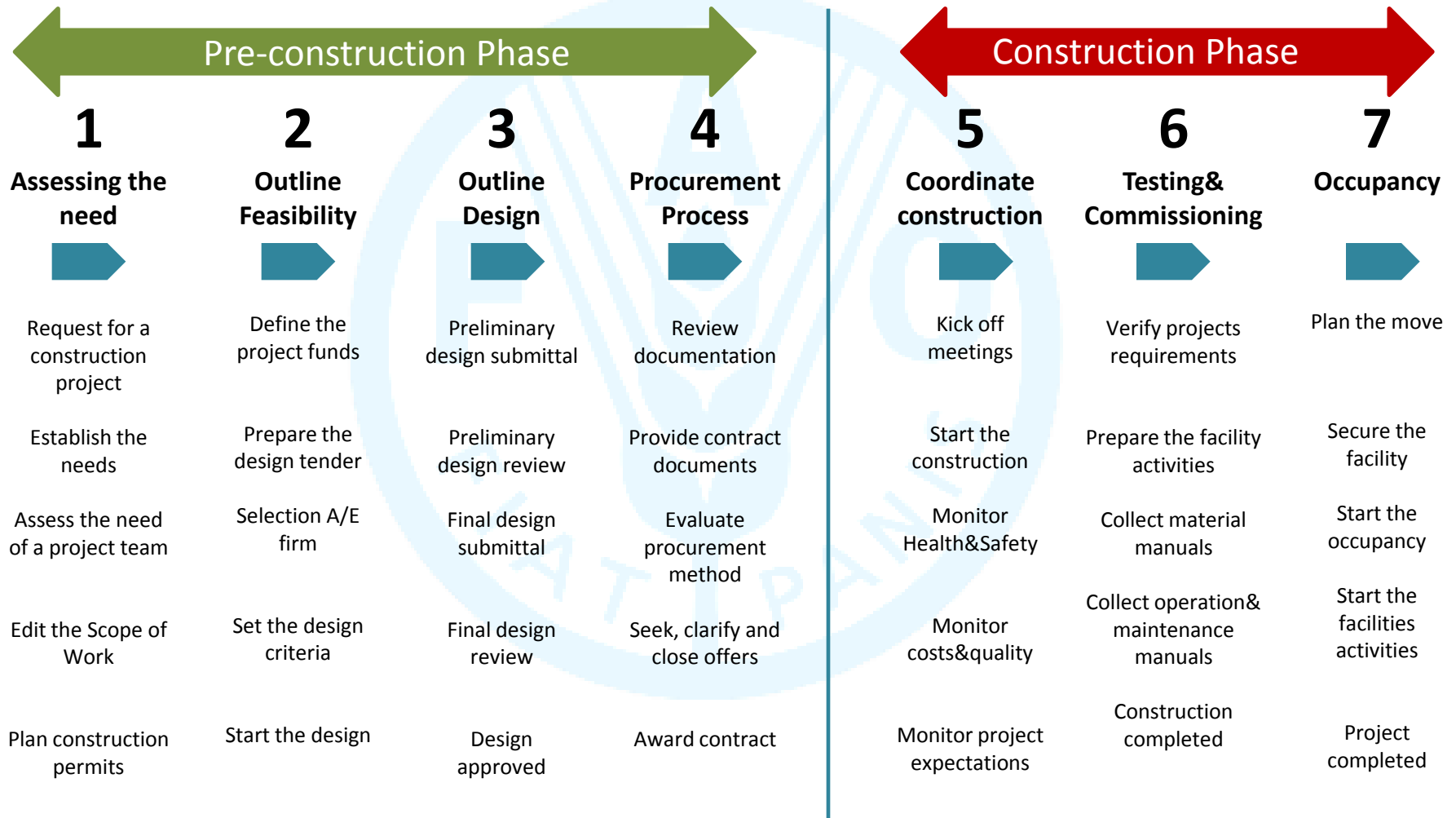
**CSAI**



# CSA INFRASTRUCTURE

## PROJECT

## PROCESS



PROJECT ASSESSMENT

project definition

## What may CSAI PROVIDE?

<b>PRE CONSTRUCTION PHASE</b>	<ul style="list-style-type: none"><li>• SCOPE OF WORK</li><li>• SITE SURVEYS</li><li>• FEASIBILITY STUDIES</li><li>• DESIGN/DESIGN REVIEW</li><li>• COST ESTIMATE</li><li>• BASIC SCHEDULE</li><li>• CONTRACTOR'S CAPABILITY EVALUATION</li></ul>
<b>CONSTRUCTION PHASE</b>	<ul style="list-style-type: none"><li>• RESIDENT ENG./ARCH. RECRUITMENT ASSESSMENT</li><li>• CONSTRUCTION INSPECTION</li><li>• TESTING &amp; COMMISSIONING</li><li>• CLOSE OUT</li></ul>

## PRE CONSTRUCTION PHASE - DEFINITION

PERIOD DURING WHICH THE NEED/PROBLEM IS IDENTIFIED AND THE SOLUTION IS DEFINED

“CLEAR DEFINITION OF THE PROBLEM  
IS HALF THE SOLUTION”

## REQUEST

IT MUST IDENTIFY:

- A **NEED** OR AN OPPORTUNITY
- ONE OR MORE POSSIBLE **ANSWERS**
- THE **COST** AND THE **RESOURCES** TO BE USED
- WHO IS TAKING **ADVANTAGE** OF THE INITIATIVE
- POSSIBLE **FUTURE** DEVELOPMENTS AND SIMILAR SITUATIONS THAT CAN TAKE ADVANTAGE DURING THE PROJECT

# CSA INFRASTRUCTURE

**01. REQUEST**



**11. AWARD AND CONTRACT**

PROJECT ASSESSMENT — Pre-construction phase —

# CSA INFRASTRUCTURE

**01. REQUEST**

**02. ENVIRONMENTAL REVIEW**

**11. AWARD AND CONTRACT**

PROJECT ASSESSMENT — Pre-construction phase

# CSA INFRASTRUCTURE

**01. REQUEST**

02. ENVIRONMENTAL REVIEW

03. SCOPE OF WORK

**11. AWARD AND CONTRACT**

PROJECT ASSESSMENT — Pre-construction phase —

# CSA INFRASTRUCTURE

**01. REQUEST**

02. ENVIRONMENTAL REVIEW

03. SCOPE OF WORK

04. ESTIMATES

**11. AWARD AND CONTRACT**

PROJECT ASSESSMENT — Pre-construction phase —



# CSA INFRASTRUCTURE

**01. REQUEST**

02. ENVIRONMENTAL REVIEW

03. SCOPE OF WORK

04. ESTIMATES

05. DESIGN

**11. AWARD AND CONTRACT**

PROJECT ASSESSMENT — Pre-construction phase

# CSA INFRASTRUCTURE

**01. REQUEST**

02. ENVIRONMENTAL REVIEW

03. SCOPE OF WORK

04. ESTIMATES

05. DESIGN

06. DESIGN CONTRACT ADMINISTRATION

**11. AWARD AND CONTRACT**

PROJECT ASSESSMENT — Pre-construction phase

# CSA INFRASTRUCTURE

**01. REQUEST**

**07. ARCH./ENG. AGREEMENT**

**02. ENVIRONMENTAL REVIEW**

**03. SCOPE OF WORK**

**04. ESTIMATES**

**05. DESIGN**

**06. DESIGN CONTRACT ADMINISTRATION**

**11. AWARD AND CONTRACT**

PROJECT ASSESSMENT — Pre-construction phase

# CSA INFRASTRUCTURE

**01. REQUEST**

02. ENVIRONMENTAL REVIEW

03. SCOPE OF WORK

04. ESTIMATES

05. DESIGN

06. DESIGN CONTRACT ADMINISTRATION

07. ARCH./ENG. AGREEMENT

08. ARCHITECTURAL/ENGINEERING  
SERVICE CONTROL

**11. AWARD AND CONTRACT**

PROJECT ASSESSMENT — Pre-construction phase

# CSA INFRASTRUCTURE

**01. REQUEST**

02. ENVIRONMENTAL REVIEW

03. SCOPE OF WORK

04. ESTIMATES

05. DESIGN

06. DESIGN CONTRACT ADMINISTRATION

07. ARCH./ENG. AGREEMENT

08. ARCHITECTURAL/ENGINEERING  
SERVICE CONTROL

09. DESIGN PHASE REVIEWS

**11. AWARD AND CONTRACT**

PROJECT ASSESSMENT — Pre-construction phase

# CSA INFRASTRUCTURE

**01. REQUEST**

02. ENVIRONMENTAL REVIEW

03. SCOPE OF WORK

04. ESTIMATES

05. DESIGN

06. DESIGN CONTRACT ADMINISTRATION

07. ARCH./ENG. AGREEMENT

08. ARCHITECTURAL/ENGINEERING  
SERVICE CONTROL

09. DESIGN PHASE REVIEWS

10. BID

**11. AWARD AND CONTRACT**

PROJECT ASSESSMENT — Pre-construction phase

# CSA INFRASTRUCTURE

**PRELIMINARY MEETING**



**CLOSE OUT**

— PROJECT ASSESSMENT — construction phase —

# CSA INFRASTRUCTURE

**PRELIMINARY MEETING**

FINAL INSPECTION

CONSTRUCTION QUALITY CONTROL

TESTING & COMMISSIONING

CONTRACTOR'S QUALITY CONTROL

SAFETY DURING CONSTRUCTION

FAO QUALITY ASSURANCE REPORTS

PROGRESS PAYMENTS

CONSTRUCTION CONTRACT NO  
COMPLIANCE NOTICE

INTERIM SITE MEETINGS

**CLOSE OUT**

PROJECT ASSESSMENT — construction phase